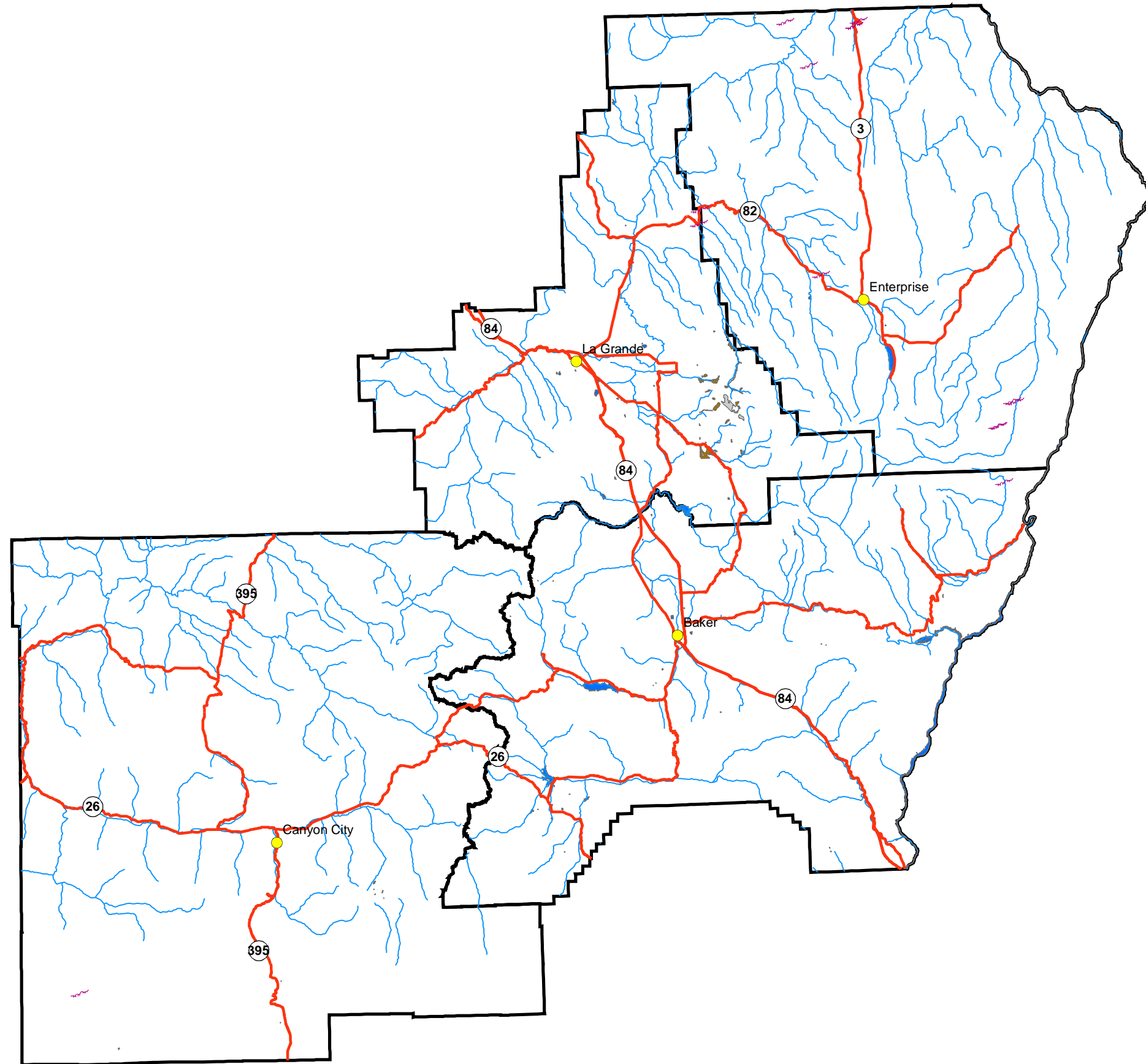


# **Hazard Annex**

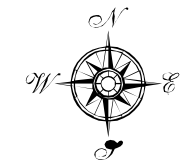
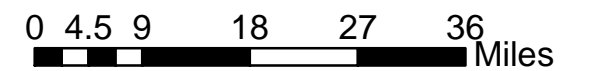
## **Landslide**

# Northeast Oregon Natural Hazard Risk Reduction Plan Debris Flow Areas



**Legend**

- County Seats
- Landslides
- Roads
- Streams
- Lakes
- Landslide Areas
- Stream Alluvium
- Ash and Eolian Deposits
- Alluvial Fan Deposits
- Landslide Deposits
- County Boundary



Data Sources: County boundaries, county seats, streams and lakes are from the Oregon Geospatial Data Clearinghouse. Critical and Essential facility data was provided by each individual county. Roads are from Oregon Dept. of Transportation. Power lines and Airstrips are from Oregon Department of Forestry.

Maps created by Wallowa County GIS, a division of the Wallowa County Planning Department.

The information on this map was gathered from various sources. Care was taken in the creation of this map but it is provided "as is". Wallowa County cannot accept any responsibility for errors, omissions, or positional accuracy in the digital data or the underlying records. There are no warranties, express or implied, including the merchantability or fitness for a particular purpose, accompanying this product. However, notification of any errors will be appreciated.

## LANDSLIDE HITS SCOUT CAMP

**Published: July 19, 2002**

By Gary Fletcher

Observer Staff Writer

WALLOWA LAKE — Some terrified 10- and 11-year-olds and their parents from Pendleton and the Tri-Cities escaped from a Boy Scout camp dining hall about 4 p.m. Thursday before the building was carried away by a flash flood and crashed into trees.

Thundershowers high in the hills above the camp filled streams and caused the flooding and mudslide, officials said.

Some of the group of 30 Webelo Scouts who were outside the dining hall saw a "black waterfall and trees falling, and warned the others," said Don Butler, an employee at the Blue Mountain Council's Wallowa Lake Scout Camp. Later someone reported the smell of fresh dirt in the air.

The group headed for Butler's cabin 200 feet on the opposite side of the West Fork of the Wallowa River.

The last of them were crossing a suspension footbridge across the river when they looked back to see the mess hall they'd just evacuated, carried down the hill in a mudslide and crash into trees.

Camp director Monte Job's pickup truck washed down the hill and into the river. Trapped inside was Blondie, his 11-year-old yellow lab.

The scout group made it to Butler's cabin.

Then the river changed course, bypassed the suspension foot bridge built in 1996 and cut a new channel within 20 feet of the cabin.

Two residences became an island. A tree service company in the area used its cherry picker to pluck a man from one of them.

Wallowa County Sheriff Fred Steen and Undersheriff Steve Rogers arrived on the scene to make an assessment. Those plans were thrown in reverse when a second wall of water came down at them, smashing two camp staff cars together.

The sheriff's team began going door to door downstream, evacuating the area to the Methodist Camp, and then contacting some residents close to the river on the east side.

One resident reported that the high water running by her house lasted over a half hour, then began to subside. In the meantime they saw coolers, firewood and entire logs rushing by, carried atop dark waves.

The muddy water receded and Rogers returned to the camp with search and rescue personnel who located a person upstream who had been cut off by the debris flow.

Once all the people were accounted for, a search and rescue team along with Don Holum, the new county dog control officer, retrieved Blondie from the pickup in the river. The dog had been there about three hours.

Assessing the situation overhead was a U.S. Forest Service helicopter carrying Wallowa County Commission Chairman Mike Hayward. Hayward had issued a county declaration of disaster for the south Wallowa Lake area.

For a short time, residents were warned not to drink from the south lake water system because of turbidity. The system was checked and the warning was lifted. Shortly after 8:30 p.m. most residents were allowed back in the area.

People, however, were not allowed to return to two marooned and threatened buildings, and eight other structures considered at risk due to the changing river channel and debris flows.

The American Red Cross set up a shelter for displaced people at the Joseph Community Center. The agency also opened a canteen at the south lake for emergency workers.

There were no reported injuries or deaths.

Thundershowers high in the headwaters of Adams, Johnson and BC creeks caused them to rise. Apparently saturated soils up BC Creek liquefied and came roaring down the steep slope.

The National Weather Service was forecasting clearer skies for the area over the weekend.

The debris flow was several feet thick. Woody debris created a surface skiff approximately 200 feet in diameter at the south end of the lake.

Boaters were advised to watch out for logs and debris floating on the lake.

"We really appreciate people's cooperation," said Matthew Marmor, Wallowa County Emergency Program manager. Marmor was referring to the residents who cooperated in leaving their cabins, as well as all the volunteers and agencies that responded to help.

"This community responds well together," Marmor said.

A similar flash flood about four years ago struck the Hurricane Creek Campground, forcing people from their tents. There were no injuries. Earlier, gullywashers took out the Hurricane Creek Road.

Reach Gary Fletcher at 541-426-3255 or at entobs@eoni.com.

## SCOUT EXECUTIVE RECOUNTS FLASH FLOOD, NARROW ESCAPE

**Published: July 20, 2002**



**DESTROYED IN A FLASH:**  
**Pacific Power workers shut off electricity to the Wallowa Lake Boy Scout camp mess hall after it was destroyed by a flash flood Thursday. Heavy rain in a high, snow-filled basin triggered the deluge.**

Observer photos/GARY  
FLETCHER

By Gary Fletcher

Observer Staff Writer

WALLOWA LAKE — Heavy July rains, not October snow, closed Wallowa Lake Boy Scout Camp this year.

No one was injured Thursday when a landslide destroyed the mess hall as its occupants fled to safety. Three vehicles were also moved and damaged by the flash flood. Heavy rain in a high, snow-filled basin triggered the deluge of debris.

"We will definitely rebuild," said W. Mark Griffin, Scout executive of the Blue Mountain Council in Kennewick, Wash.

However, with the council's financial difficulties, and no flood insurance coverage, he had no idea when the rebuilding could start.

Griffin said he was proud of the staff of four adults and six teens, and the 15 Scouts each there with a parent.

"The staff, youth and parents were calm and excited during the life-threatening adventure," he said, "They handled everything well."

A fire drill, held the first day of each camp, lets everybody know that "here's where you go" and a head count is taken to make sure everyone is OK. In 1966, an adult and a youth were lost when the original mess hall burned. It was rebuilt about a year later, Griffin said, and rebuilt again in 1992.

"Everybody knew what to do Thursday. That's why we drill," Griffin said. "They acted quickly and got out of way."

Be Prepared is the Scouts' motto. The whole focus is to prepare people for crisis situations, Griffin said.

Thursday, the Scouts were taking part in rainy-day activities inside the dining hall.

One of the 15 parents was outside and saw the stream changing color, heard a noise like a jet and saw trees coming down the hill, Griffin said.

The group fled the area over a suspension foot bridge across the Wallowa River.

What likely is the heart of the former camp's appearance in many people's memory now looks like a steep, alluvial fan of rocks and mud.

However, this is only a small portion of the 90-acre site, much of which is located on an extremely steep hillside.

Accessibility will be the key issue, Griffin said. There is no longer access to the upper campsites across B.C. Creek. Access to the entire camp is also an issue. The council wants no general traffic up Pollock Road, in consideration of the neighbors. The long-term plan was to develop a parking lot on Scout property east of the river and access the camp across the foot bridge.

Now the new river channel moved out from under the bridge and around the east end of it through the Scout property.

- Camp history

The camp was established in 1938 after Pacific Power & Light donated land to the Scouts.

The camp was a regular Boy Scout summer camp through which merit badges could be earned. The camp even had a rifle range.

In 1980, water issues became a concern because of new county standards, Griffin said. The Scout council couldn't afford a new water system, Griffin said. The issues were resolved when the Scouts allowed the Wallowa Lake Water District put a water tank on Scout property. In turn, the Scouts were allowed use of the newly approved water system.

A full-scale summer operation could not be afforded after that, because the council had financial problems, Griffin said. Local people stepped forward to support the camp. Among them were Dale Mammon of La Grande, Jerry Perren of Enterprise and Ben Boswell of Lostine.

The camp has been used since for training courses, and two- to three-night

campouts. Griffin said the council realized there was a potential to do more, such as older teen high-adventure treks working with the Forest Service regarding low-impact, leave-no-trace camping.

The council covers eight Northeast Oregon counties and four Southeast Washington counties.

The youth who escaped the building Thursday were Heppner and Tri-Cities Webelo Scouts, 10 and 11 year olds preparing to become Boy Scouts.

Their escape route took them by the old A-frame cabin untouched by the slide. Some water ran around both sides of a big new log building being constructed, and apparently left it undamaged. The building was donated by Dr. Stacey Clark and husband Robert, of La Grande.

Persons wishing to contribute to rebuild the camp can contact W. Mark Griffin, Scout Executive, BSA Blue Mountain Council, 8478 West Gage Blvd., Kennewick, WA 99336; e-mail [mgriffin@bsaemail.org](mailto:mgriffin@bsaemail.org); telephone 800-821-4939.

Other damage included the B.C. Creek Bridge, washed out above the camp on the Chief Joseph Mountain Trail 1803. As a result, that trail is closed. The West Fork Wallowa River Trail 1810 to the high lakes basin and 1820 to Frazier Lake and Hawkins Pass remains open.

Forest Service engineers thought it unlikely that the B.C. Creek Bridge could be replaced this season, because of the processes to be completed, such as seeking funding. An engineer estimated the replacement cost to be in excess of \$100,000. The bridge was constructed with a helicopter, within the last 12 years, Griffin said.

About 1/8 mile below the Scout camp on the Wallowa River, two residences are encircled by water, because the river channel was moved to the east some 200 feet. It rejoins the main channel below the two residences.

Wallowa County Commission Chairman Mike Hayward, reviewing the site again Friday, said that it is up to the property owners and the Oregon Division of State Lands to decide if an attempt will be made to put the river back in its previous channel, now filled with debris.

Reach Fletcher at

[gletcher @lagrandeobserver.com](mailto:gletcher@lagrandeobserver.com)

## STORM ROCKS WALLOWA LAKE AREA

**Published: June 29, 2004**



**ROADBLOCK: A severe thunderstorm Monday scattered rocks across roads at Wallowa Lake. Erosion from hail and rain rutted driveways and trails at the lake.**  
The Observer/GARY  
FLETCHER

ENTERPRISE — An intense thunderstorm Monday temporarily blocked trail riders, knocked out telephone service, and scattered rocks across roads at Wallowa Lake.

The slide was about 2 miles up the Aneroid Lake Trail. It was below the power dam and bridge, so horseback riders detoured around it via Pacificcorp's road to the dam.

The north end of the county also got pounded with rain, said Matthew Marmor, Wallowa County emergency program manager.

Flash flood warnings were issued by the National Weather Service for the Wenaha area in the northwest section of Wallowa County. No damages have yet been reported.

About 11 a.m. a black cloud hung over Wallowa Lake for nearly an hour and marble-sized hail piled up.

The hail stripped needles off tamarack trees, cones off the Douglas fir and blooms from the flowers, a resident said.



The runoff turned into streams down the west moraine and through property such as Trout Haven resort.

The erosion rutted driveways and trails, and washed away some of the lakeshore bank.

Lakeshore Drive, on the lake's west side, was cleared by 3 p.m., and telephone service was restored by about 4 p.m.

— Gary Fletcher